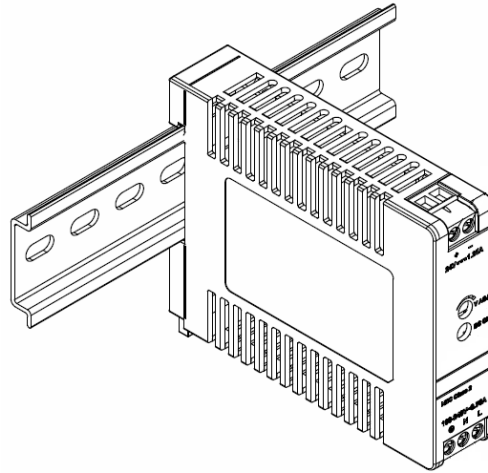


Datasheet

24 VDC Compact power supply for industrial environments



General

MICROSENS has developed special compact power supplies for extremely demanding industrial applications under harsh environmental conditions.

The key feature of the power supplies is their insensitivity to electrical interference, which is particularly important for use in fail-safe industrial and manufacturing environments. Other important features are high efficiency, compact dimensions, low dead weight and easy mounting (snap-on) on DIN rails.

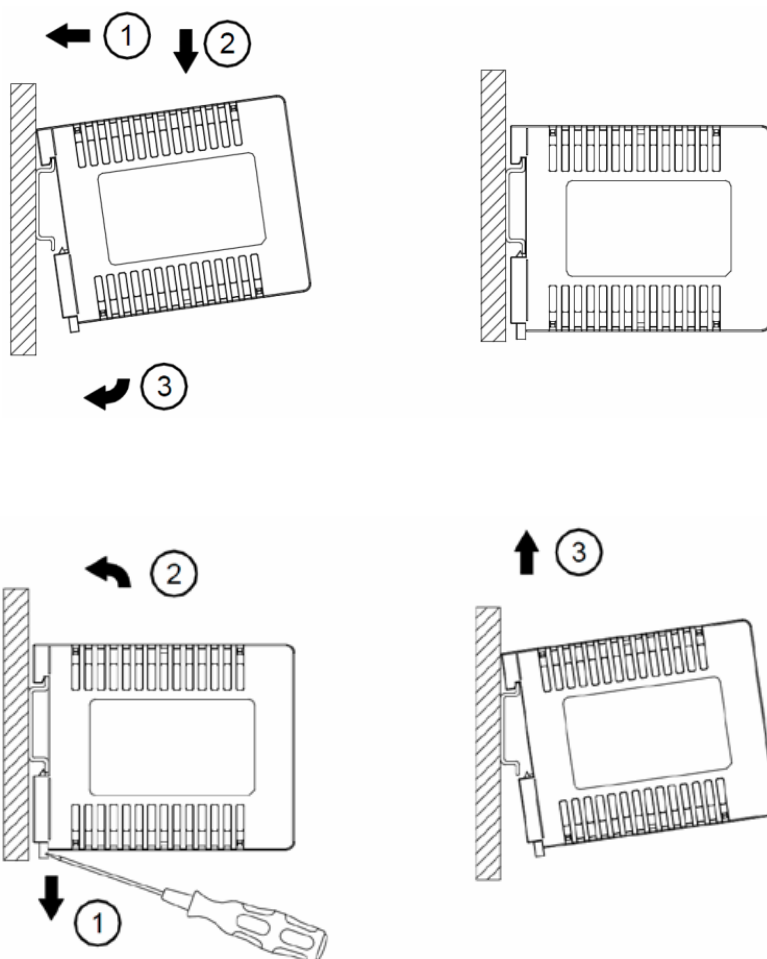
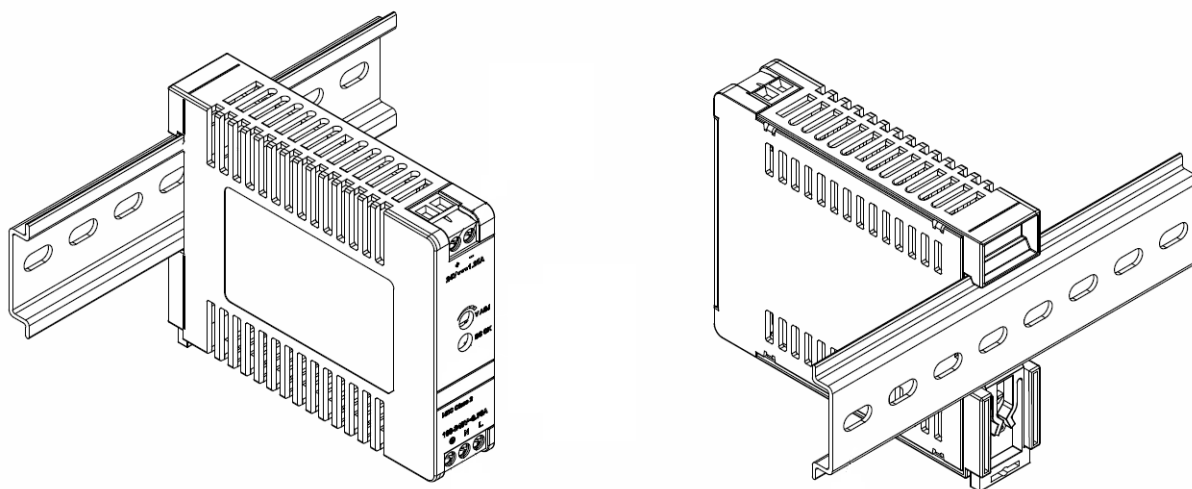
The power supplies have a wide range input for AC and DC voltages. Power classes of 24, 60 and 120 W are offered. Output voltages of 24 VDC and 48 VDC are available. The output voltage can be adjusted within a predefined range. All devices are equipped with an effective overvoltage and overload protection.

The MICROSENS product range for the industrial sector includes, in addition to the compact power supplies described here, active network components of the Entry Line, Profi Line and Profi Line Modular series.

Features

- Highest reliability and availability
- for industry, transport, manufacturing environments, traffic control, monitoring and signalling systems, energy sector
- High efficiency
- Wide range input 100..264 VAC or 120..375 VDC
- Output voltage 24 VDC (adjustable)
- Power output 1,25A (30W max.)
- Effective overvoltage and overload protection
- Compact dimensions and low dead weight

Mounting



The power supply unit is snapped into place using a snap-on mounting. Several units can be easily connected in a row thanks to the optimized heat dissipation.

Technical Details

In-/ Output

Type	Industrial power supply unit for DIN rail
Input	Rated input voltage:: 100..240 VAC/ 120..375 VDC Input frequency: (AC) 47-63 Hz AC input current: <0,35 A @ 230 VAC Interference suppression level: EN61000/A
Output	Rated output voltage: 24 VDC Adjustment range: 24..28 VDC Output current: 1,25 A Rated power output: 30 W

Performance

Efficiency	≥ 88% (typical)
Power regulation	< 0.5% (@ 85-264Vac, 100% load)
Load regulation	< 1.0% (@ 85-264Vac, 0-100% load)
Reboot time	< 30ms @ nominal input (100% load)
Startup time	< 2,500ms @ 115 VAC (100% load)
Power failure bypass	> 20ms @ 115 VAC (100% load)
Reliability	MTBF: >700.000 h (Telcordia SR-332)

Protection Classes & Standards

Protection class	EN 60950-1, UL 60950-1, CSA C22.2 No. 60950-1 (File No. E191395), IEC 60950-1, Limited Power Source (LPS)
EMC compliance	EN 61000-6-3, EN 61000-6-4, CISPR 22, EN 55022 EN 55011, FCC Title 47: Class B
LED-Displays	DC OK (green)
Protection class	IP20

Dimensions

Dimensions	21 x 89,5 x 75 mm (W x D x H)
Weight	110 g

Environment

Temperature	Operation -20...+70 °C Storage -40...+85 °C
Humidity	5...95%, non condensing

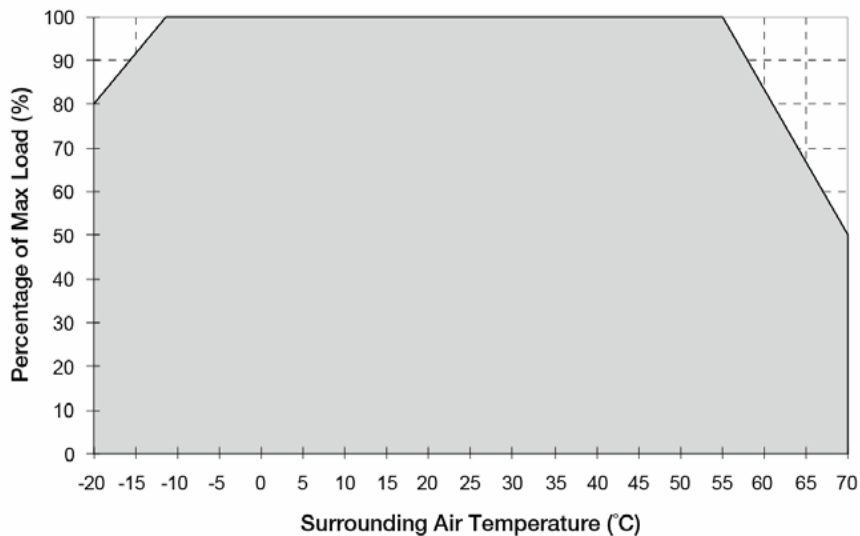
LED-Displays

DC OK	Green
--------------	-------

Connection

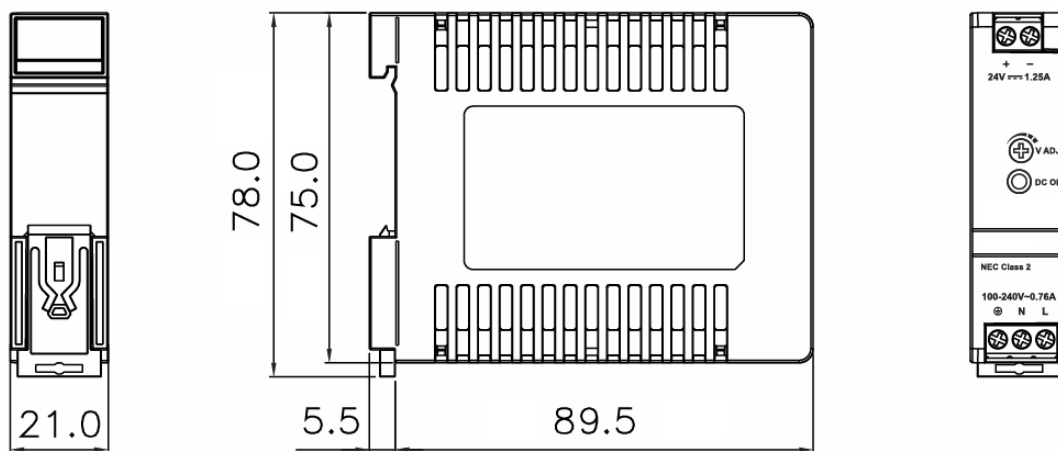
Input	AWG=22-12 (3 Pins)
Output	AWG=20-12 (2 Pins)

Derating (Temperature)



-10°C...-20°C: Power reduction um 2% / °C
 > 55°C: Power reduction um 3,33% / °C

Dimensions (in mm)



Order Information

	Description	Art. No.
	24 VDC Compact power supply for DIN rail	
	DIN-Rail Power supply 30 Watt 24 VDC / 1,25 A, Wide range input 100...264 VAC, 120...375 VDC	MS700440

This document in whole or in part may not be duplicated, reproduced, stored or retransmitted without prior written permission of MICROSENS GmbH & Co. KG. All information in this document is provided 'as is' and subject to change without notice. MICROSENS GmbH & Co. KG disclaims any liability for the correctness, completeness or quality of the information provided, fitness for a particular purpose or consecutive damage. MICROSENS is a trademark of MICROSENS GmbH & Co. KG. Any product names mentioned herein may be trademarks and/or registered trademarks of their respective companies. 11/2019 mf/pk - translated fdb 4120